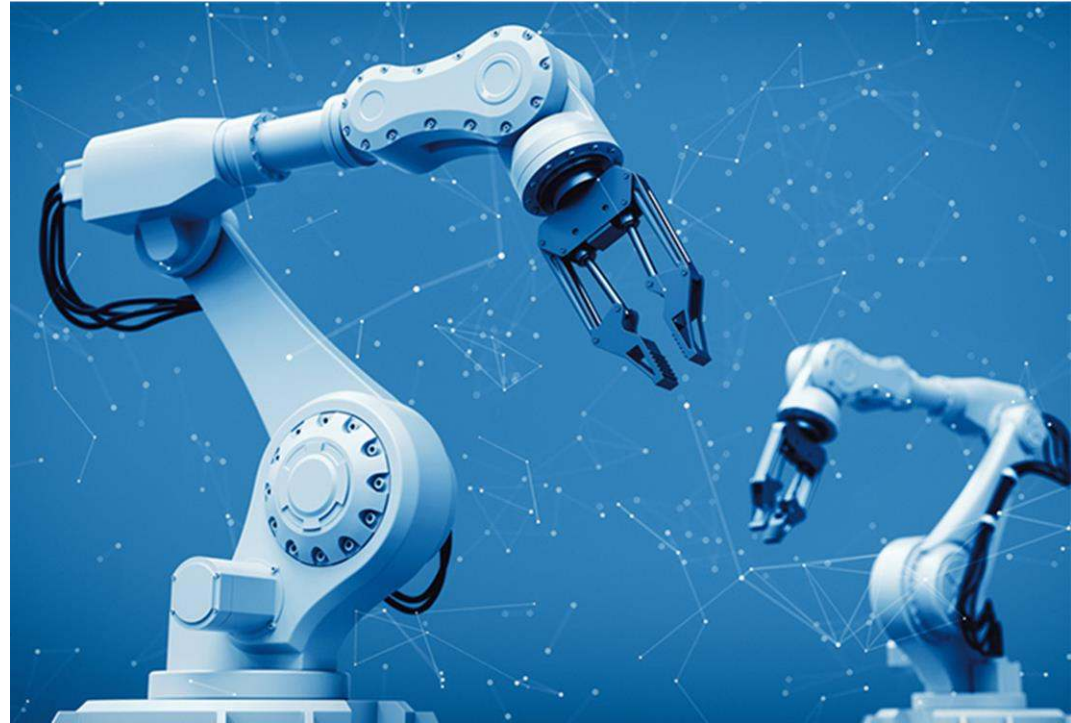




(partnership with)



October 10, 2023



Trusted Advisors for Growth



Greg Surtman

Workforce Development Manager

greg.surtman@toolingu.com

(216) 212-2587



Advocating for the Manufacturing Sector across North America



Events

sme.org/events

SME produces premier manufacturing events across North America to help companies showcase their capabilities and connect customers to solutions. 90,000+ manufacturers attend SME events annually.



Media

sme.org/smemedia

A leading source for news and in-depth technical information about advanced manufacturing in North America. SME Media serves an audience of more than 290,000 manufacturing professionals.



Membership

sme.org/join

Providing manufacturing practitioners with unparalleled opportunities to connect with peers, gain knowledge related to technology and trends, solve problems and participate in leadership opportunities.



Education Foundation

smeef.org

Dedicated to developing, building and advancing the next generation of manufacturing and engineering workforce. SME Education Foundation has invested more than \$11 million in youth programs, helping over 60,000 students.



Tooling U-SME

toolingu.com

A learning and development organization dedicated to helping thousands of Manufacturers and schools by delivering structured and sustainable training programs aligned to their goals in the most practical, consumable and customized way.

INNOVATING THROUGH TECHNOLOGY & PEOPLE



FLEXIBLE, INDUSTRY-DRIVEN

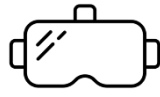
MANUFACTURING TRAINING

Training is an investment. An investment in better. An investment in empowerment. Training offers the best opportunity for a future of more. Tooling U-SME bridges the gap between educational excellence and real-world application. Teach specific, applicable, and highly sought-after skills that will engage, motivate, and prepare. Enhance the classroom experience.

We serve the future of our workforce: community colleges, universities, high schools, the justice-involved, veterans, the unemployed, the underemployed, the dislocated, and beyond. Our classes elevate. Our programs empower. Our people team can help bring your purpose and promise to fruition.



Online



VR



Assessments



Books & Video



Certification



Custom



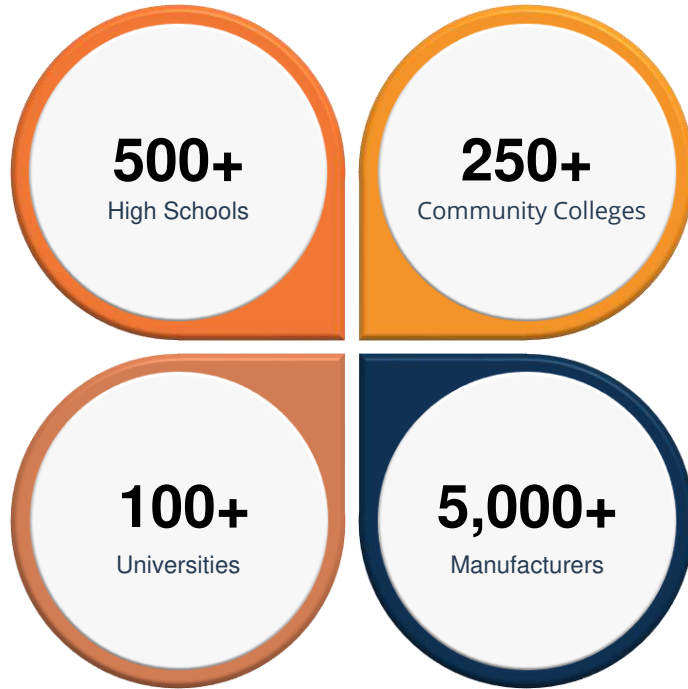
Instructor-Led



Almost 600 online courses

OUR PARTNERS

We believe it is important for educators and employers to collaborate on building the next-generation workforce, and we help connect them.



OTHER PARTNERS:

- Economic Development Agencies
- Workforce Development Agencies
- Community Based Organizations
- Manufacturing Associations
- Manufacturing Extension Partnerships (MEPs)

More than half of the Fortune 500 Manufacturers in the United States

Commitment to Online Course Development:

- Team of 30 full-time designers & developers at Tooling U-SME
- 3-4 courses released per month (New, Updated, Revised)

- ☐ Additive Manufacturing
- ☐ CyberSecurity for Manufacturing
- ☐ Artificial Intelligence
- ☐ Industrial Internet of Things (IIoT)
- ☐ Robotics & Automation
- ☐ Big Data
- ☐ Electronic Vehicles (EV)
- ☐ Virtual Reality



The User Experience:

- 1-hour to complete each class
- Pre-Assessment
- Interactive Learning Experience
 - ☐ Audio
 - ☐ Video
 - ☐ Text
 - ☐ Simulation
 - ☐ Quizzes
- Final Exam

Administrative Options:

- Administrative Access
- Permissions & Controls
- Individual & Group Reports
- Custom Programs
- Certificates of Completion



HOW CAN MANUFACTURERS BENEFIT FROM ONLINE LEARNING?



Onboard New Employees



Custom Online Learning Packages



Blended/Hybrid Delivery



Compliance Training (i.e. OSHA)



Apprenticeships



Industry Certifications



Certification Pathways



Certified Manufacturing Associate (CMfgA): 25 online courses



- Introduction to Additive Manufacturing 111
- Introduction to CNC Machines 201
- Introduction to Assembly 101
- Safety for Assembly 211
- Tools for Threaded Fasteners 235
- Basic Measurement 101
- Basics of Tolerance 121
- Blueprint Reading 131
- 5S Overview 151
- Troubleshooting 181
- Quality Overview 111
- Introduction to Robotics 201
- Robot Safety 211
- Bloodborne Pathogens 161
- Intro to OSHA 101
- Ergonomics 102
- Personal Protective Equipment 111
- Lockout/Tagout Procedures 141
- SDS and Hazard Communication 151
- Hand and Power Tool Safety 201
- Fire Safety and Prevention 181
- Math Fundamentals 101
- Math: Fractions and Decimals 111
- Units of Measurement 112
- Lean Manufacturing Overview 101

Certification Exam:

- 75 questions (multiple choice)
- 2-hour time limit
- Pass = 70%
- Can be virtually proctored



WHAT MAKES TOOLING U-SME DIFFERENT?



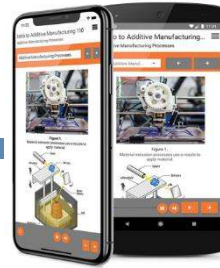
Industry Driven Content

All courses designed and developed with guidance from Industry Subject Matter Experts.



Learning Management System (LMS)

LMS can manage and track learning initiatives



Mobile Access

Courses can be taken on tablet or smartphone (iPhone & Android) by downloading the Tooling U-SME app



Client Success Management

Supporting clients throughout the entire training implementation

Individual Subscriptions (per user)

Type of Subscription	Length
10-pack (10 courses)	365-days
25-pack (25 courses)	365-days
All-Access	90-days
All-Access	180-days
All-Access	365-days

- Individual Start/End date
- Access to Tooling U-SME's LMS



Annual Site License (all access)

# of Users	Length
50-99	365-days
100-499	365-days
500-999	365-days
1000+	365-days

- Shared Start/End date for all Users
- Access to Tooling U-SME's LMS
- 3rd Party LMS Integration Option
- Minimum 50 Users



Limited Free Trial Account

- Free Trial Account (FTA)
- Information to Provide:
 - company name & location
 - main contact name
 - main contact email address
 - identify area(s) of interest



[Tooling U Online Training Services - Kansas City Manufacturing Network \(kcmn.org\)](#)



Functional Areas:

- ☐ Abrasives
- ☐ Additive
- ☐ Assembly-Fasteners
- ☐ CNC Machining
- ☐ Composites
- ☐ Electrical Systems
- ☐ Hydraulics-Pneumatics
- ☐ IIoT-CyberSecurity
- ☐ Inspection
- ☐ Leadership
- ☐ Lean-Quality
- ☐ Manual Machining
- ☐ Materials
- ☐ Mechanical Systems
- ☐ Metal Cutting
- ☐ Motor Controls
- ☐ PLCs
- ☐ Robotics
- ☐ Safety
- ☐ Stamping-Press Brake
- ☐ Shop Math
- ☐ Welding





Greg Surtman

Workforce Development Manager

greg.surtman@toolingu.com

(216) 212-2587

Chrissy Cooney

Senior Workforce Education Strategist

christin.cooney@toolingu.com

(330) 810-4879

www.toolingu.com